



470 CLASS EUROPEAN CHAMPIONSHIPS

8TH – 15TH 2013
FORMIA, ITALY

SAILING INSTRUCTIONS

Circolo Nautico Vela Viva and Circolo Nautico Caposele in co-operation with the Italian Sailing Federation (FIV), the 470 National Class Association and the International 470 Class Association are pleased to invite the 470 sailors to take part in the:

Men's 470 European Championship (for men crews)
and the
Women's 470 European Championship (for women crews)

1. Rules

1.1 The regatta will be governed by the rules as defined in *The Racing Rules of Sailing* (RRS).

1.2 No national authority prescriptions will apply.

1.3 For medal races, ISAF Addendum Q Umpired Fleet Racing, available on the ISAF website (www.sailing.org) will apply, and changes a number of racing rules. The version that is current when the regatta begins will appear in full in the Sailing Instructions.

1.4 If there is a conflict between languages the English text will take precedence.

1.5 The Sailing Instructions take precedence over the Notice of Race. This changes rule 63.7.

2. Identification

2.1 Each day, the first, second and third boats in the series ranking at the beginning of the day shall wear yellow, blue and red bibs respectively while racing. The bibs will be provided by the organizing authority.

2.2 Boats in specified fleets shall display bow numbers. The organizing authority will supply the numbers and instructions for their use.

2.3 Boats shall display required event sponsor advertising. The organizing authority will supply the advertising and instructions for their use.

2.4 For split fleets events, boats shall display a colored ribbon corresponding to the fleet to which she has been assigned. The ribbons shall be fixed above the upper batten of the main sail. The organizing authority will supply the ribbons.

3. Cameras and Electronic Equipment

Boats may be required to carry cameras, sound equipment or positioning equipment as specified by the organizing authority.

4. Notices to Competitors

Notices to competitors will be posted on the official notice board located at Caposela Y.C. (second floor).

5. Changes to the Sailing Instructions

Any change to the sailing instructions will be posted before 10:00 on the day it will take effect, except that any change to the schedule of the first races of a day will be posted by 20:00 on the day before it will take effect. Any reassignment of course areas can be done 30 minutes before flag D is displayed or 30 minutes before flag AP is removed ashore - see instruction 6.2 and 6.3.

6. Signals Made Ashore

6.1 Signals made ashore will be displayed on the flag pole located at Caposela Y.C. terrace. When a signal is displayed over a racing area or fleet flag, it applies to that racing area or fleet only. This changes the Race Signal preamble.

6.2 When flag AP is displayed ashore, '1 minute' is replaced with 'not less than 45 minutes' in race signal AP

6.3 Flag D is displayed ashore, 'The warning signals will be made not less than 45 minutes after flag D is displayed or not before the scheduled time, whichever is later. Boats shall not leave their allocated berths until this signal is made'.

6.4 When flag Y is displayed, rule 40 applies at all times while afloat. This changes the Part 4 preamble.

7. Regatta format

7.1 The regatta will consist of an Opening Series and a Medal Race. The opening series may be divided into a qualifying series and a final series. The top 8 finishers in the opening series will be advance to the medal race.

7.2 Opening series:

7.2.1 Qualifying series – 5 races scheduled for each event, boats will be divided into fleets.

7.2.2 Boats will be assigned to fleets Yellow, Blue, Red, Green, etc. of, as possible, equal size and ability; Initial assignment will be made by a seeding committee appointed by the International 470 Class Association. Those assignments will be posted by 1000 on the day of the first scheduled race for each event.

7.2.3 Boats will be reassigned to fleets after each day of racing, except if on the first day fewer than two races are completed by all fleets. If all fleets have completed the same number of races, boats will be reassigned on the basis of their ranks in the series. If all fleets have not completed the same number of races, the series scores for reassignment will be calculated for those races, numbered in order of completion, completed by all fleets. For four fleets, and similarly for any other number, reassignments will be made as follows:

<i>Rank in series</i>	<i>Fleet assignment</i>
<i>First</i>	<i>Yellow</i>
<i>Second</i>	<i>Blue</i>
<i>Third</i>	<i>Red</i>
<i>Fourth</i>	<i>Green</i>
<i>Fifth</i>	<i>Green</i>
<i>Sixth</i>	<i>Red</i>
<i>Seventh</i>	<i>Blue</i>
<i>Eight</i>	<i>Yellow</i>
<i>and so on</i>	

If two or more boats have the same rank, they will be entered in the left column in the order of fleets in SI 7.2.2.

7.2.4 Assignments will be based on the ranking available at 2100 that day regardless of protests or requests for redress not yet decided.

7.2.5 If all fleets have not completed the same number of races by the end of a day, the fleets with fewer races will continue racing the following day until all fleets have completed the same number of races. All boats will thereafter race in the new fleets.

7.3 Final series:

7.3.1 6 races are scheduled for each event.

7.3.2 Boats will be assigned to final-series fleets Gold, Silver, Bronze, Emerald, etc., on the basis of their ranks in the qualifying series. There will be the same number of fleets in the final series as there were in the qualifying series. The final-series fleets will have, as nearly as possible, equal size but none larger than the Gold fleet. Boats with the best qualifying-series ranks will race all final-series races in the Gold fleet, boats with the next-best qualifying-series ranks will race in the Silver fleet, etc.

7.3.3 Any recalculation of qualifying-series ranking after boats have been assigned to final-series fleets will not affect the assignments except that a redress decision may promote a boat to a higher fleet.

7.4 Medal Race:

7.4.1 A medal Race will be scheduled for each event with 3 or more final series including the Carry Forward Race completed.

7.4.2 The eight boats ranked highest in the final series will be assigned to compete in the medal race.

7.4.3 Assignments to the medal race will be based on the ranking available at 0800 on the day of the medal race. The protest committee may extend this time limit.

7.5 Single Series:

If there would be fewer than 40 entries at event, then the Championship will be competed in one single fleet with 11 final races followed by the Medal Race.

8. Schedule

8.1 Daily schedule:

Day 1 June 8 th	Registration and equipment inspections	1000-1800
Day 2 June 9 th	Registration and equipment inspections Opening Ceremony	0900-1800 19:00
Day 3 June 10 th	Qualifying series	13:00
Day 4 June 11 th	Qualifying series	TBA
Day 5 June 12 th	Qualifying/Final series	TBA
Day 6 June 13 th	Qualifying/Final series	TBA
Day 7 June 14 th	Qualifying/Final series	TBA
Day 8 June 15 th	Final series/Medal Race Closing Ceremony	TBA 19:00

8.2 No more than three races shall be sailed each day.

8.3 Races not sailed on the scheduled day may be sailed on a following day at the discretion of the race committee.

8.4 The warning signal for each succeeding race will be made as soon as practicable.

8.5 After a long postponement, to alert boats that a race or sequence of races will begin soon, the orange starting line flag will be displayed with one sound for at least five minutes before a warning signal is displayed.

8.6 No warning signal will be given after 16:00 on the last day.

9. Class Flags

9.1 Class flags for single series will be:

9.1.1 470 Men Europeans: White flag with Blue 470 insignia.

9.1.2 470 Women Europeans: Blue flag with Red 470 insignia.

9.2 Class flags for Men Qualifying series will be: fleets will use Yellow, Blue, flags which are the corresponding fleet warning signals.

9.3 Class flags for Men Final series will be: fleets will use Yellow flag for Gold fleet, Blue flag for Silver fleet, for the warning signal.

9.4 Class flag for the medal race will be as in S.I. 9.1

10. Racing Areas

Attachment A shows the location of racing areas.

11. The Courses

11.1 The diagrams in **Attachment B** show the courses, the course designations, the approximate angles between legs, the order in which marks are to be passed, and the side on which each mark is to be left.

11.2 Courses will not be shortened. This changes RRS 32.

11.3 No later than the warning signal, the race committee signal boat will display the course designation and the approximate compass bearing of the first leg.

12. Marks

12.1 Marks 1, 2, 3 (3s/3p) and 4 (4s/4p) will be orange inflatable cylindrical.

12.2 The starting marks will be the race committee starting boat at the starboard end and a boat displaying an orange flag at the port end. See **Attachment B**.

12.3 The finishing marks will be the race committee finishing boat at the port end and a buoyancy with an orange flag, at the starboard end. See **Attachment B**.

12.4 New marks as provided in instruction 14.1 will be yellow inflatable cylindrical.

12.5 A race committee boat signaling a change of course is a mark as provided in S.I. 14.2.

13. The Start

13.1 The starting line will be between staffs displaying orange flags on the starting marks.

13.2 Boats whose warning signal has not been made shall avoid the starting area. The starting area is defined as a rectangle 50 meters from the starting line and marks in all directions.

13.3 A boat starting later than four minutes after her starting signal will be scored DNS. This changes rule A4 and A5.

14. Change of the Position of the Next Mark

14.1 To change the next leg of the course, the race committee will (a) lay a new mark, (b) move the finish line, or (c) move the leeward gate. When a new mark is laid, the original mark will be removed as soon as practicable. When in a subsequent change a new mark is replaced, it will be replaced by an original mark.

14.2 Except at a gate, boats shall pass between the race committee boat signaling the change of course and the nearby mark, leaving the mark to port and the race committee boat to starboard. This changes rule 28.1.

15. The Finish

The finishing line will be between orange flags on the finishing marks.

16. Penalty System

16.1 Appendix P, Special Procedures for rule 42, will apply.

16.2 Rule P2.3 will not apply and rule P2.2 is changed so that it will apply to any penalty after the first one.

17. Time Limits

17.1 Time limits are as follows:

	Time Limit	Mark 1 time limit	Finish window	Race Target time
Fleet race	75 min.	25 min.	15 min.	50 min.
Medal race	45 min.	15 min.	10 min.	25 min.

17.2 If no boat has passed Mark 1 within the Mark 1 time limit the race will be abandoned.

17.3 Boats failing to finish within the time stated in the Finish Window after the first boat sails the course and finishes will be scored Did Not Finish. This changes RRS 35, A4 and A5.

17.4 Failure to meet the target time will not be grounds for redress. This changes rule 62.1(a).

18. Protests

18.1 Protest forms are available at the Race Office. Protests and requests for redress or reopening shall be delivered there within the appropriate time limit.

18.2 For each fleet, the protest time limit is 60 minutes after the last boat has finished the last race of the day.

18.3 Notices will be posted within 30 minutes of the protest time limit to inform competitors of hearings in which they are parties or named as witnesses. Hearings will be held in the protest room beginning at the time posted. Hearings may be scheduled to begin up to 30 minutes before the end of the protest time.

18.4 Notices of protests by the race committee or protest committee will be posted to inform boats under rule 61.1(b).

18.5 A list of boats that have been penalized under Appendix P for breaking RRS 42 will be posted.

18.6 For the purpose of rule 64.3(b) the 'authority responsible' is the 470 Technical Delegate.

18.7 Breaches of instructions 2, 3, 6.3, 6.4, 13.2, 20, 22, 24, 25 and 26 will not be grounds for a protest by a boat. This changes rule 60.1(a). Penalties for these breaches are at the discretion of the protest committee.

18.8 On the last racing day of the qualifying series or final series a request for reopening a hearing shall be delivered:

(a) within the protest time limit if the requesting party was informed of the decision on the previous day.

(b) no later than 30 minutes after the requesting party was informed of the decision on that day. This changes rule 66.

18.9 On the last racing day of the qualifying series or final series, or on the last day of racing, a request for redress based on the jury decision shall be delivered no later than 30 minutes after the decision was posted. This changes rule 62.2.

18.10 Decisions of the jury will be final as provided in rule 70.5.

19. Scoring

19.1 The Low Point System shall apply to all races, including the Carry Forward Race as in SI 19.4.2. RRS A4.1 is changed so that the boat finishing first shall be scored 0 points and points scored in the medal race are double.

19.2 The scoring abbreviation for a discretionary penalty under SI 18.7 will be DPI.

19.3 To request correction of an alleged error in posted race or series results, a boat may complete a scoring enquiry form available at the race office.

19.4 Qualifying series:

19.4.1 At least 4 qualifying races shall be completed to constitute the qualifying series.

19.4.2 All race scores from the qualifying series will be carried forward (CF) to the Final series with points equal to a boat's final rank in the qualifying series. This Carry Forward race (CF) shall not be excluded.

19.4.3 For the qualifying series, RRS A4.2 is changed so that those scores are based on the number of boats assigned to the largest fleet.

19.4.4 If at the end of the qualifying series some boats have more race scores than others, scores for the most recent races will be excluded so that all boats have the same number of race scores.

19.4.5 For final ranking, boats assigned to the Gold fleet will be ranked higher in the regatta than the boats assigned to the Silver fleet, and so on.

19.5 Final series:

19.5.1 There will be 6 races in the final series.

19.5.2 At least 3 final races including the Carry Forward Race for the Gold fleet are required to be completed to constitute the regatta series for all fleets and/or to enter the Medal race.

19.5.3 Final series fleets will be scored separately and different final series fleets need not have completed the same number of final races.

19.6 Single series:

19.6.1 There will be 11 final races in the single series.

19.6.2 At least 6 final races are required to be completed to constitute the regatta

19.7 Discards:

19.7.1 At the Qualifying series:

a.) When fewer than 4 races have been completed, a boat's series score will be the total of her race scores,

b.) When 4 races have been completed, a boat's series score will be the total of

her race scores excluding her worst scores.

19.7.2 At the Final series:

- a.) The Carry Forward Race (CF) shall not be excluded.
- b.) When fewer than 4 races including the Carry Forward Race have been completed, a boat's series score will be the total of her race scores,
- c.) When 4 races including the Carry Forward Race have been completed, a boat's series score will be the total of her race scores excluding her worst scores.

19.7.3 At the Medal Race: The score of the medal race will not be excluded.

19.8 Medal Race:

19.8.1 The boats assigned to compete in the medal race will be ranked highest in the regatta except for a boat disqualified from the medal race under RRS 5 or 69.

19.8.2 RRS A4.1 is changed so that the points are doubled, and RRS A4.2 is changed so that the scores are based on the number of boats assigned to compete in that race.

19.8.3 For boats assigned to compete in the medal race, ties in the regatta score are broken by the medal race score. This changes RRS A8. For boats with the same points score in the medal race, ties in the regatta score are broken applying RRS A8 :

19.8.4 A boat assigned to compete in the medal race shall make a genuine effort to start, sail the course and finish. The penalty for a breach of this instruction will be ranking the boat tenth in the regatta. If there are two such boats, they will be ranked ninth and tenth, in order of their opening-series ranks, and so on. This changes RRS A2.

20. Safety Regulations

20.1 Check-out and check-in: All Competitors must sign each day:

- a.) before leaving to race on each schedule day.
- b.) within the protest time limit after returning ashore.

The tally point will be near the slipway at port Caposela

20.2 Boats not leaving the shore for the day's races or retires from a race shall notify the race office as soon as possible.

20.3 The penalty for failure to comply with this instruction will be 5 points to be added to the first race of the day. This changes rule A5.

20.4 When flag Y is displayed on the Signal Boat, rule 40 applies.

21. Replacement of Crew or Equipment

21.1 Substitution of competitors will not be allowed without prior written approval of the race committee and shall comply with any restrictions in the Notice of Race.

21.2 Substitution of damaged or lost equipment will not be allowed unless approved by the race committee. Requests for substitution shall be made to the race committee at the first reasonable opportunity

22. Equipment and Measurement Checks

A boat or equipment may be inspected at any time for compliance with the class rules and sailing instructions. On the water, a boat can be instructed by a race committee measurer to proceed immediately to a designated area for inspection.

23. Official Boats

Official boats will be marked as follows:

Official Boat	Flag
Race Committee	Flag " RC"
Jury	Flag "J"
VIP	Flag with Club Logo
Gear	Flag "Gear"
Press/Media boats	Flag with Event Logo
Safety Boat	Flag "S"
Medical	Flag " + "
Measurers	Flag "M"

24. Support Boats

24.1 Support boats with team leaders, coaches and other support personnel shall stay outside areas where boats are racing from the time of the warning signal for the first fleet to start until all boats have finished or the race committee signals a postponement, general recall or abandonment.

24.2 During any starting sequence, support boats shall stay at least 50 meters below the starting line and its extensions.

24.3 Registered support boats shall fly a flag with their three letter national code clearly displayed or shall be permanently marked with a sticker of their three letter national code on each side of the boat or engine.

24.4 Registered support boats are at all times submitted to the Organizing Authority and Race Committee authority and shall be legally considered as assistance / rescue boats and must comply with any instructions given by those authorities or by the police.

24.4 All support boats shall have third party liability insurance with a minimum cover of **EUR 1,000,000** per event or equivalent. A certificate of such insurance shall be shown during registration.

25. Trash disposal

As sailors, we seek to protect and restore our oceans and coastal waters. Boats shall not intentionally put trash in the water. Trash may be placed aboard support and race committee boats.

26. Berthing

When berthed, boats shall be kept in their assigned place in the boat park.

27. Radio Communication

A boat shall neither make radio transmissions while racing nor receive radio communications not available to all boats, except in an emergency or when using equipment provided by the race committee. This restriction also applies to mobile telephones.

28. Prizes and title

The first crew of the final official ranking list of each Championship will be declared:

“470 Class Men’s European Champion”
and
“470 Class Women’s European Champion”

Medals will be awarded to the first, second and third crews of each Championship by the International 470 Class Association.

29. Disclaimer of Liability

Competitors participate in the championship entirely at their own risk. See rule 4, Decision to Race. The Organizing Authority and all parties involved in the regatta organization will not accept any liability for material damage or personal injury or death sustained in conjunction with or prior to, during, or after the championship.

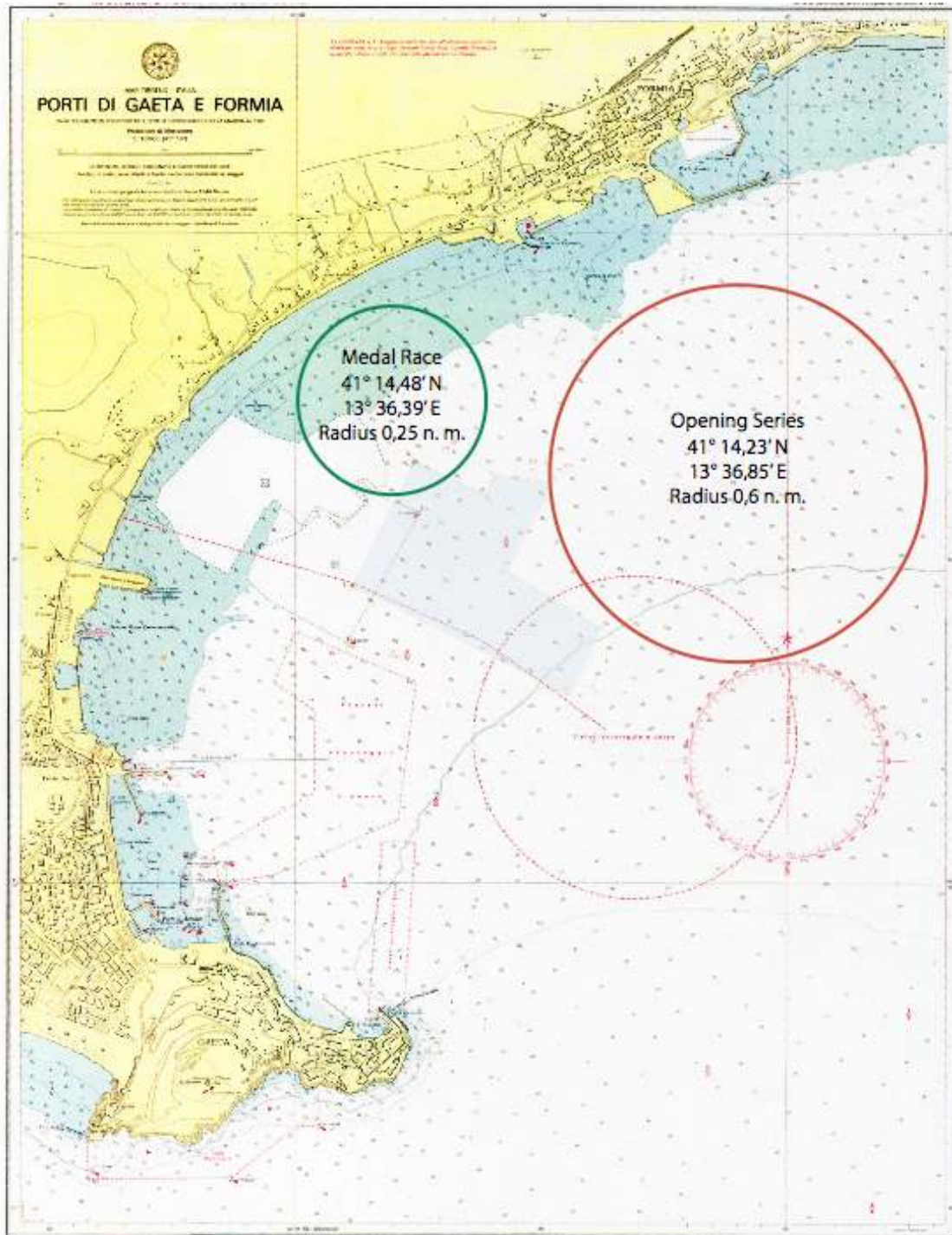
30. Rights to use name and likeness

By participating in this championship competitors automatically grant to the International 470 Class Association and to the organizing authority and their sponsors the right in perpetuity to make, use and show, from time to time at their discretion any motion pictures, still pictures and live, taped or filmed television and other reproductions of the athlete during the championship, and of all of his or her material related to the championship, without compensation.

31. Insurance

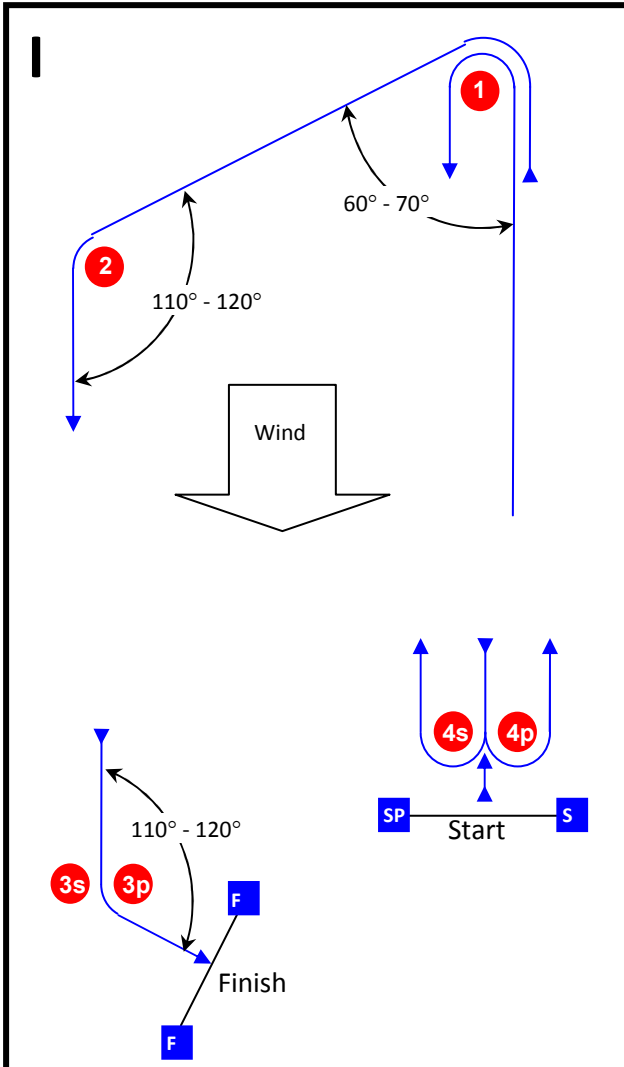
Each participating boat shall be insured with valid third party liability insurance with a minimum cover **EUR 1.000.000** per event or equivalent. A certificate of such insurance shall be shown during registration.

Attachment A – Race Area



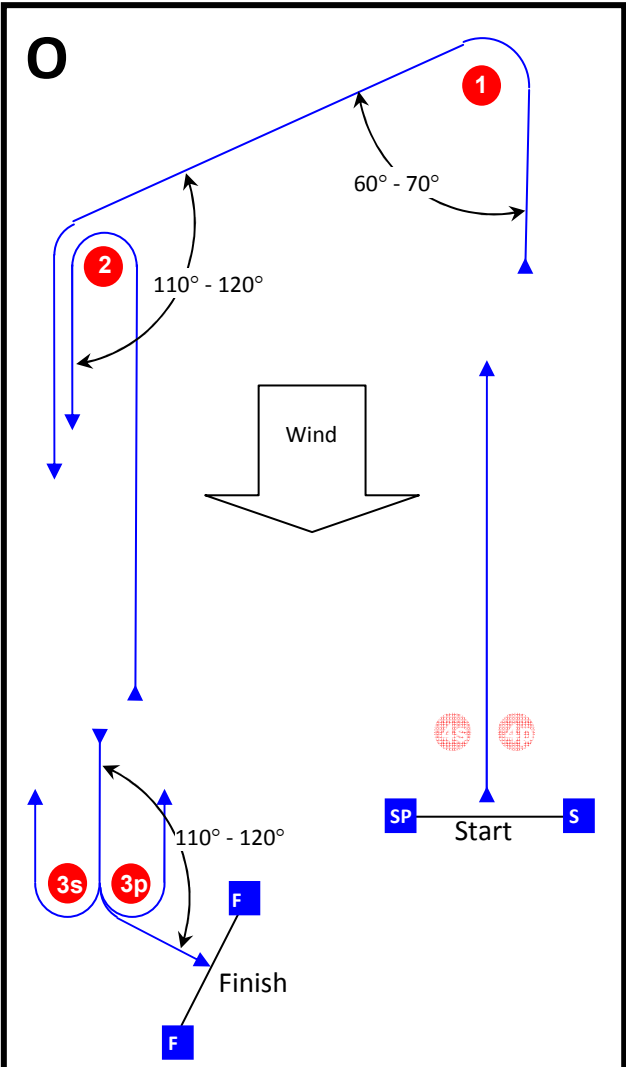
Attachment B – Courses

Course Illustration – Trapezoid



Course: Inner Trapezoid

Signal	Mark Rounding Order
I2	Start – 1 – 4s/4p – 1 – 2 – 3p – Finish
I3	Start – 1 – 4s/4p – 1 – 4s/4p – 1 – 2 – 3p – Finish
I4	Start – 1 – 4s/4p – 1 – 4s/4p – 1 – 4s/4p – 1 – 2 – 3p – Finish



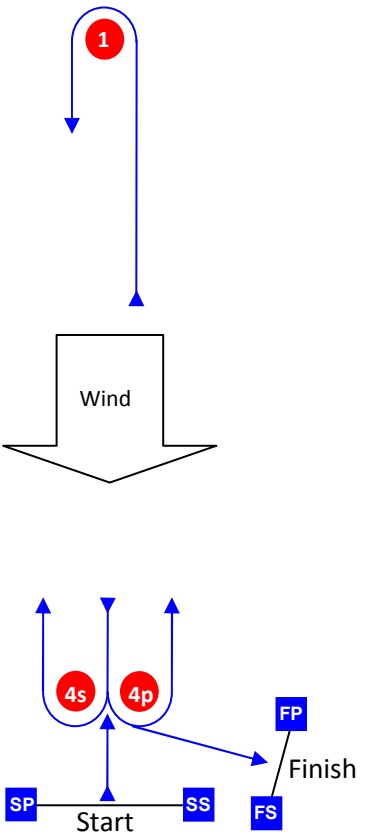
Course: Outer Trapezoid

Signal	Mark Rounding Order
O2	Start – 1 – 2 – 3s/3p – 2 – 3p – Finish
O3	Start – 1 – 2 – 3s/3p – 2 – 3s/3p – 2 – 3p – Finish
O4	Start – 1 – 2 – 3s/3p – 2 – 3s/3p – 2 – 3s/3p – 2 – 3p – Finish

Mark	Description
1 2	Large Orange Cylindrical Buoys
3s 3p	Orange Cylindrical Buoys
4s 4p	Orange Cylindrical Buoys
S Starting mark starboard end	Committee Boat
SP Starting mark port end	Committee Boat
F Finishing mark starboard end	Committee Boat
F Finishing mark port end	Committee Boat

Course Illustration – Windward Leeward with reaching finish

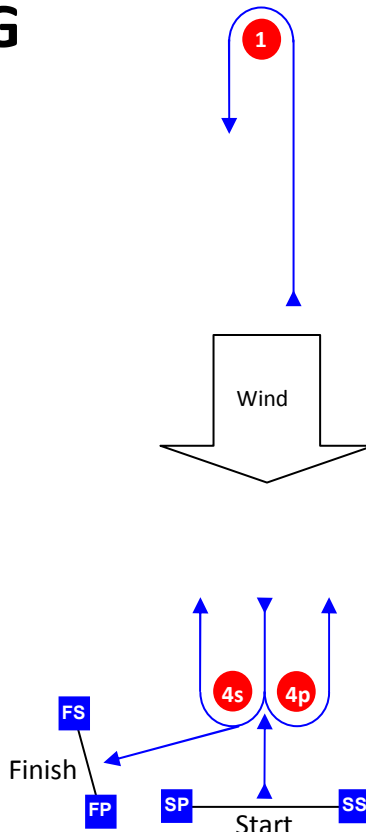
LR



Course: Windward / Leeward

Signal	Mark Rounding Order
LR2	Start – 1 – 4s/4p – 1 – 4p – Finish
LR3	Start – 1 – 4s/4p – 1 – 4s/4p – 1 – 4p – Finish
LR4	Start – 1 – 4s/4p – 1 – 4s/4p – 1 – 4p – 1 – 4p – Finish

LG



Course: Windward / Leeward

Signal	Mark Rounding Order
LG2	Start – 1 – 4s/4p – 1 – 4s – Finish
LG3	Start – 1 – 4s/4p – 1 – 4s/4p – 1 – 4s – Finish
	Start – 1 – 4s/4p – 1 – 4s/4p – 1 – 4p – 1 – 4p – Finish

Mark	Description	
1	Large Orange cylindrical Buoy	
4s 4p	Orange Cylindrical Buoys	
SS Starting mark starboard end	Committee Boat	
SP Starting mark port end	Committee Boat	
	LR	LG
FS Finishing mark starboard end	Committee Boat	Committee Boat
FP Finishing mark port end	Committee Boat	Committee Boat